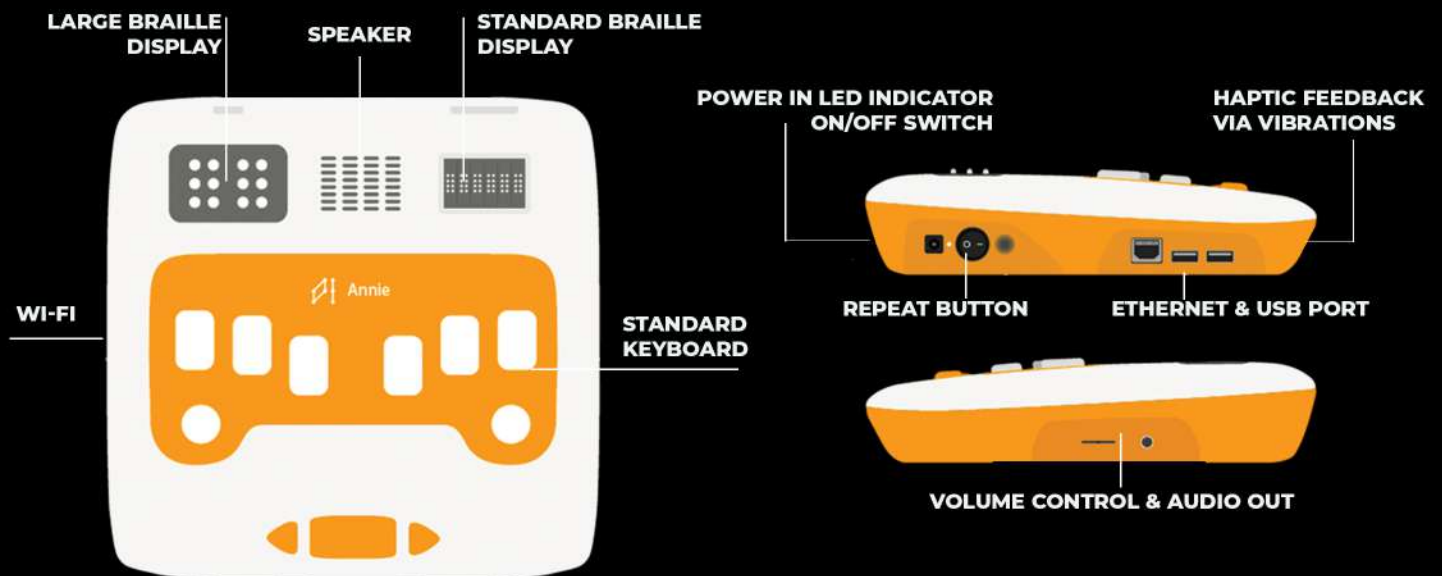


Annie Quick Start Guide

Device Layout:

Place your Annie on a flat surface with the braille cells away from you and the three distinct navigational keys towards you.

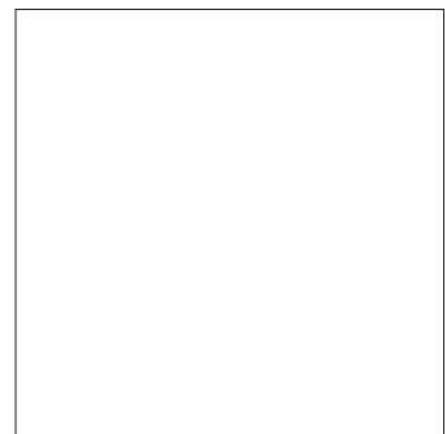


Centred on the **bottom of Annie** is a **QR code (same as the one below)**. When you scan the QR code, you will get **the Annie ID, the activation key and links to Annie Manual and Helios**.

Box Contents:

Inside the box, you will find:

- The Annie unit
- This Quick Start Guide
- A power adapter
- A power cable



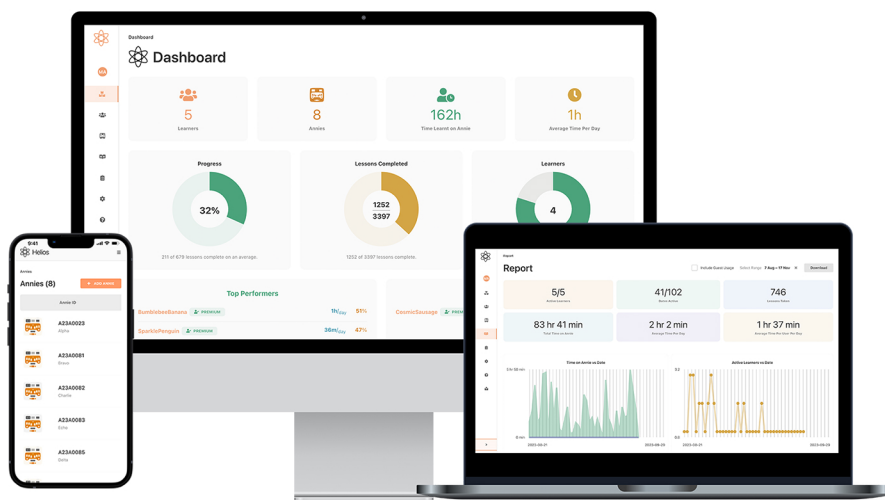
Contact support:

Europe: (0044) 1933 415800 / eu.support@humanware.com
Australia / Asia: (02) 9686 2600 / au.sales@humanware.com

Helios – the Online Companion to Annie

Helios is an integrated platform with Annie that allows easy tracking of learners' progress, assigning homework and viewing of available lessons.

When a *Learner* is assigned to your Annie, all lesson progress data is remembered when offline and is synced with Helios the next time your Annie connects to the internet.



Get Started on Helios and Activate Annie

- In a browser, open **<https://helios.thinkerbellabs.com>**.
- Enter your email address and click the 'Sign in with a link' or 'Sign in with OTP'. You will receive an email with a link or OTP to use to log into Helios.
- As you log in, an account will be created and a pop-up message will display that you do not currently have an Annie attached to your account. Click the 'Add Annie' button to get started.
- Scan the QR code on the bottom of your Annie device or the QR code on page 1 of this Quick Start Guide to find Annie's activation key.
- Enter the activation key and click the 'Verify' button.

Create a Learner:

- On Helios, click the *Learners* tab.
- Click '*Add Learner*'.
- Complete the form and click '*Save*'.

Assign a Learner to your Annie:

- On Helios, click the *Learners* tab.
- Click the *Learner* that you want to assign to Annie.
- On the Learner's page, click Edit.
- In the drop box for *Default Annie*, choose the Annie you want to assign to this Learner.
- Click the *Update* button.
- Make sure your Annie is connected to the internet, then restart your Annie. Once the Learner is assigned to Annie, you can work offline.

Connect Annie to the Internet:

Connect with an ethernet cable

- Make sure Annie is switched off.
- Connect the ethernet cable from your network to the ethernet port on Annie.
- Switch on your Annie.
- Annie will automatically connect to the internet and will say, "*Annie is connected to the internet*" during the startup process.

Connect with Wi-Fi

NOTE: If your Wi-Fi connection requires additional authentication/login to access the internet, you first have to whitelist your Annie. Directions on how to do this are found in: <https://helios.thinkerbellabs.com/annie/whitelist>

- Switch on your Annie.
- Use the directional keys to navigate to 'Settings' in the main menu. Press the spacebar to select.
- In the settings menu, select 'Network Settings' > 'Modify Wi-Fi settings using a web browser'.
- Annie will activate a local network called "*AnnieHotspot_<your_Annie_ID>*"
- Connect to the AnnieHotspot Wi-Fi network with a smartphone, computer or laptop. If you are using a smartphone, disable the mobile data.
- Once connected to AnnieHotspot, open a web browser and type **http://10.0.0.2** in the URL bar. This opens the *Annie Wi-Fi Configuration Portal*.
- Click the 'Add New' button. Available networks will be displayed.
- Select the network you want to connect to. If your desired network does not show up, enter the details manually.
- Input the passphrase or password for the network. If your WIFI does not require a password, select 'Open Network'.
- The higher the priority number, the more the network is preferred in cases where multiple stored networks are accessible.
- Click the 'Save' button.
- With the network saved, click 'Restart Annie'. Annie will automatically restart and connect to your network. During the startup process, Annie will say, "*Annie is connected to the internet.*"